



Chatham Park WWTP

Pittsboro, North Carolina, USA



Completion Date
OCTOBER 2018

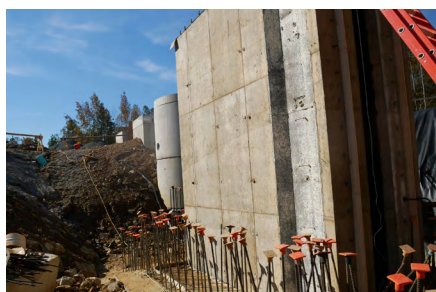
Engineer
**MCKIM & CREED
ENGINEERING**

Contractor
BOWEN ENGINEERING

Ready Mix Supplier
CHANDLER CONCRETE

Products
BIO-SAN C500, ADMIX C-500

Project Type
**WASTEWATER
TREATMENT PLANT**



Chatham Park is 7,000 acre mixed-use development, including: commercial, retail, entertainment, hotel, restaurant and office spaces as well as 22,000 residential units. A waste water treatment plant was constructed specifically for this development.

Due to the potentially high levels of H₂S in the Bioreactor McKim & Creed, the Engineers of record specified the use of a high build acid resistant coating to protect the concrete. Bowen Engineering proposed to the engineers that Xypex [Bio-San C500](#) as an alternate to this coating because it contains [Xypex's antimicrobial crystalline technology](#). This technology protects the concrete from microbial induced corrosion by killing the acid-producing bacteria. It also contains [crystalline technology](#) thereby providing watertight, chemically resistant concrete at the same time. Thus, Xypex Bio-San C500 provides similar protection of the concrete while eliminating the long term maintenance requirements associated with periodic replacement of protective coatings.

In other parts of the structure such as the headworks and various tanks, Xypex [Admix C-500](#) was used to provide watertight, chemically resistant concrete and where appropriate to protect installed liners from negative side hydrostatic push off. The use of Xypex products will provide cost effective, long term protection and waterproofing to the concrete of this new piece of critical infrastructure.